

Learning from the Children's Trust Pathfinders



Hilary Ellam

Regional Children's Trust Coordinator

Joint Children's Trusts Team

National Change Division

Joint Children's Trusts Team Structure

Ministers responsible for Children's Trusts

Margaret Hodge
Minister for Children
Young People & Families

Stephen Ladyman
Minister for
Community Care

contact the team

web www.dfes.gov.uk/childrenstrusts

email childrens.trusts@dfes.gsi.gov.uk

mail 2F Sanctuary Buildings
Great Smith Street
Westminster SW1P 3BT

Team reports to

Tom Jeffery
Children Young People &
Families Directorate

Peter Housden
Schools
Directorate

Sheila Scales
Local Transformation Group

Andrew Sargent
Division

which coordinator?

Lyn Frith → Midlands, East, South West

Andrew Turnbull → London, South East

Hilary Ellam → North, Yorkshire & Humberside

Richard Painter

richard.painter@dfes.gsi.gov.uk
020 792 55493

Adam Goldstein

adam.goldstein@dfes.gsi.gov.uk
020 792 56702

Lyn Frith

lyn.frith@dfes.gsi.gov.uk
07771 841 289

Hilary Ellam

hilary.ellam@dfes.gsi.gov.uk
07771 971 404

Richard Selwyn

richard.selwyn@dfes.gsi.gov.uk
020 792 55905

Paul McDonald

Paul.mcdonald@dfes.gsi.gov.uk
020 7925 3833

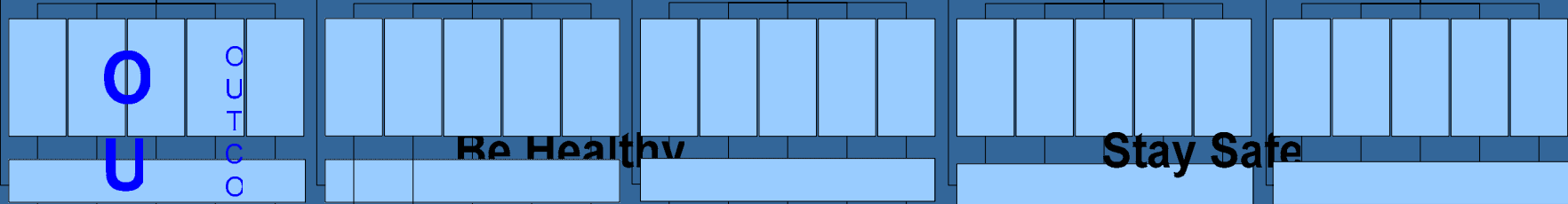
Andrew Turnbull

aturnbull.gol@gp-regions.gsi.gov.uk
020 721 73304

**Joint DH / DfES
Children's Trusts Team**

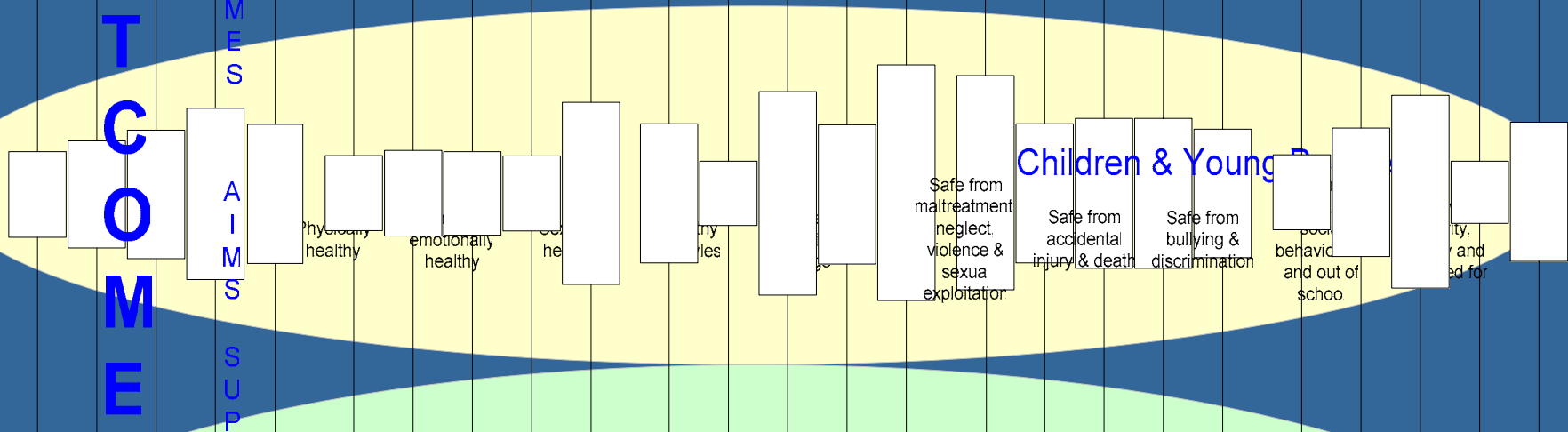
There are 26 **PSA targets** in total and 13 **other key indicators**
 For the PSA on stability of looked after children the associated performance indicators are also shown under Enjoy & Achieve

ECM:050 OUTCOMES



Be Healthy

Stay Safe



Physically healthy

emotionally healthy

socially healthy

any

files

Safe from maltreatment, neglect, violence & sexual exploitation

Children & Young People

Safe from accidental injury & death

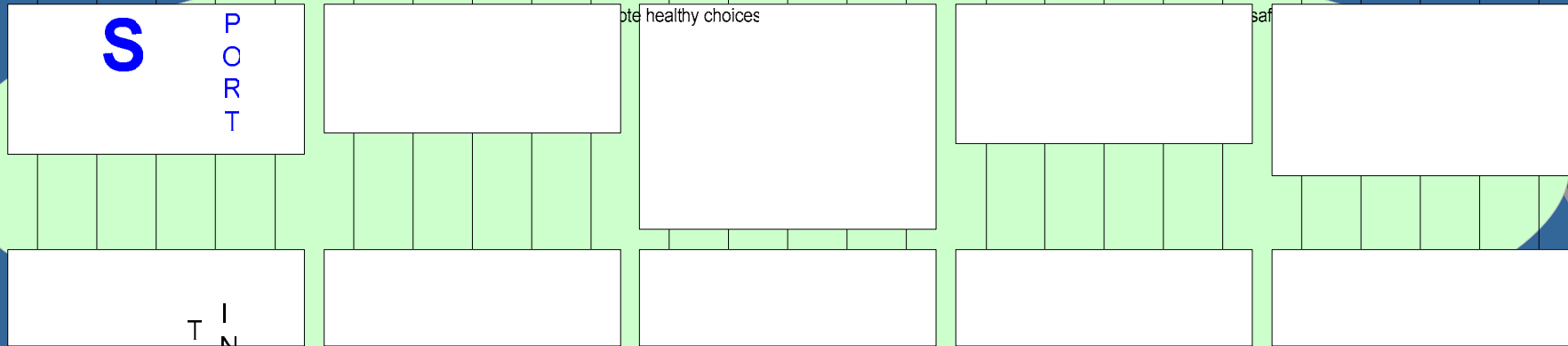
Safe from bullying & discrimination

poor behavior and out of school

stability and for

ready for school

Attend and enjoy school



note healthy choices

saf

Infant mortality rate (DH)

Deaths from suicide and undetermined injury (DH)

Rate (LIFE/DH) Diagnostic

% Children who are regular

Harm caused by illegal drugs (HO) has 3 components including

Re-registrations on Child Protection

Number of 0-15yc injured or killed in road

% 11-15yc who state they have been bullied

Fear of crime and anti-social behaviour

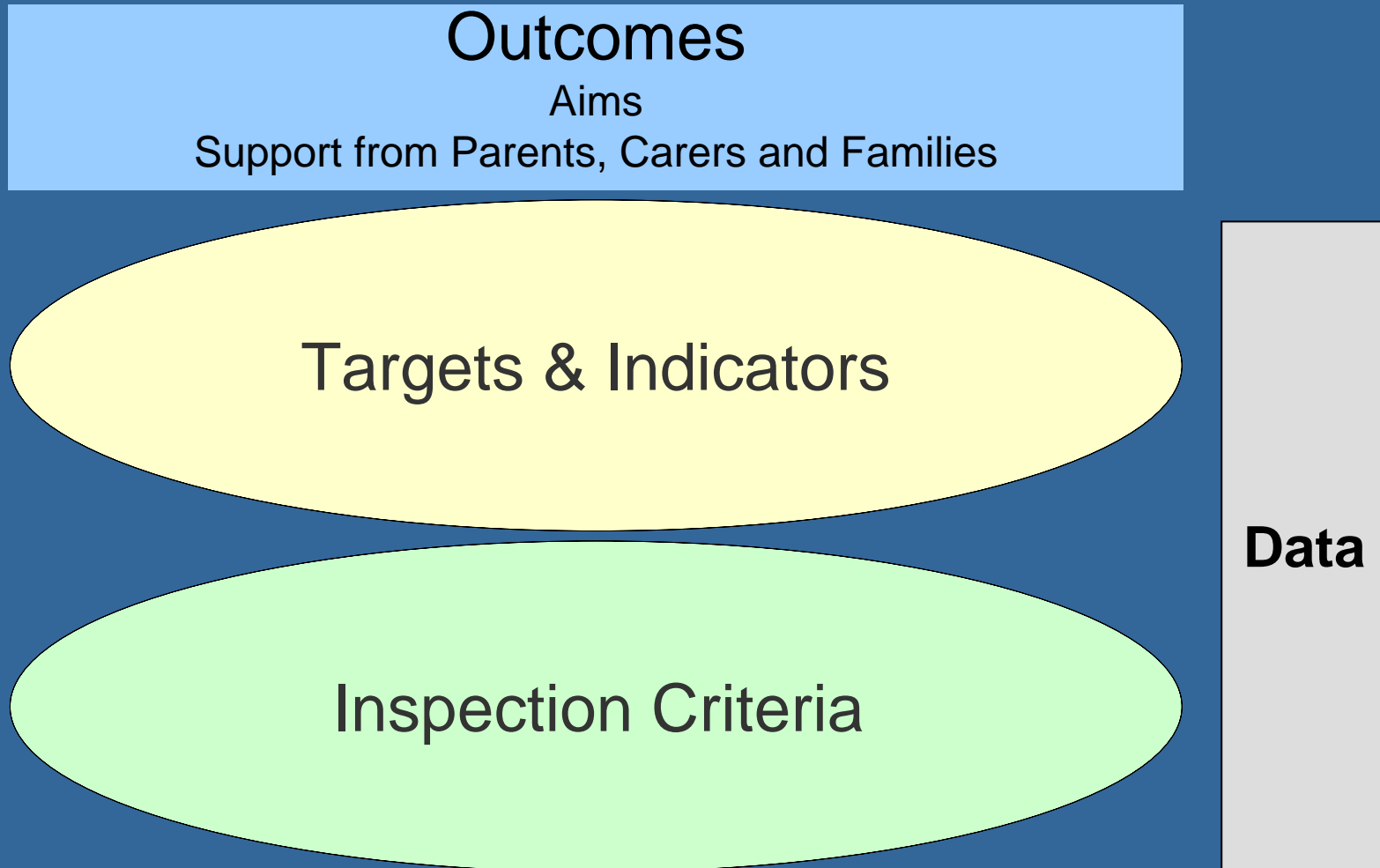
Number of children living in same placement for >2 yrs or placed for adoption (DFES)

Level of development reached at the end of the foundation stage, including narrowing the

Half day missed through

Every
 Enjoy
 Children
 Parents
 AL P

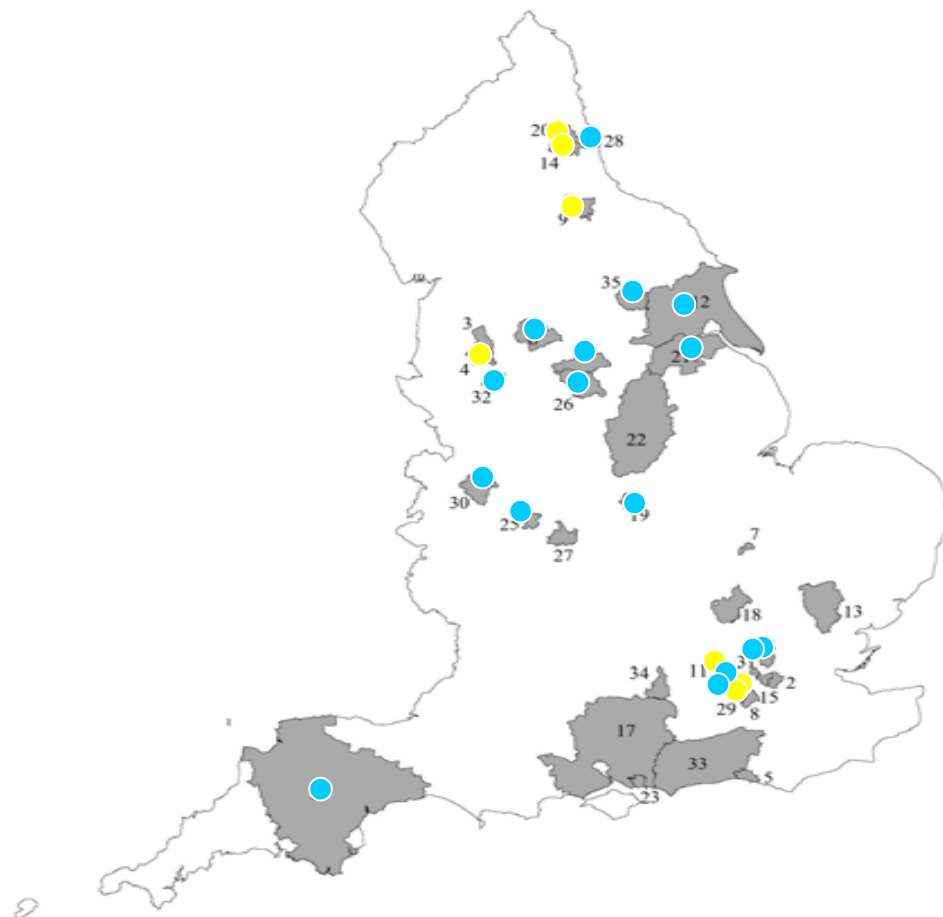
Outcomes Framework



Children's Trusts



Children's Trust Pathfinders



 **Disabled Children's Pathfinders**

 **Disabled Children identified trust priority**

/home/gis2/e328/turbine/all/all-ctps.aml 13.10.04

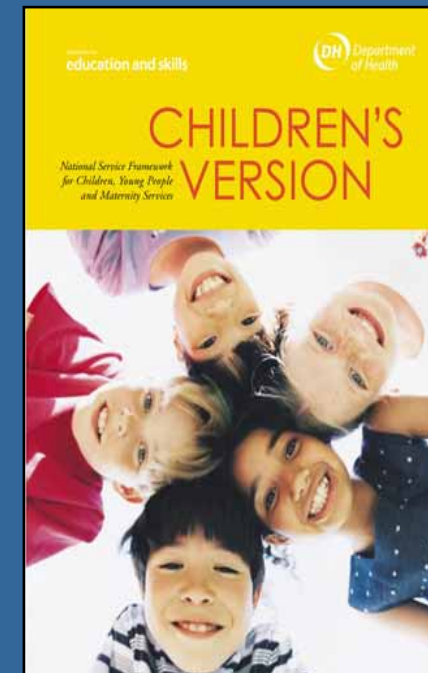
Children's Trust Pathfinders

Disabled Children Pathfinders key areas for development:

- Participation of children, young people & carers
- Multi agency / multi disciplinary teams
- Transition
- Key worker
- Single assessment
- Leisure & Culture

Outcomes for Children & Young People

- Outcome / prevention focused
- Children & Young People more involved in design & development, delivery & evaluation, than strategic planning & governance.
- Greater evidence of parent & carer involvement , than children & young people
 - At the core of integrating services for disabled children
 - Bolton and Sutton



Bolton.....from the parents

- Need for flexible support services
- Opportunities for children to access leisure services
- Accessible information about services
- Better co-ordination so that information is not repeated
- Staff that are skilled, competent & sensitive
- Support/ information through transition
- Involvement in the decision making & planning



Sutton

I would get train by myself if I knew how to - I don't know how to buy a ticket

My school escort doesn't let me cross the road on my own. I know she's trying to be protective, but I need to be independent

I don't feel safe when I go to the park

I worry about what will happen to me when I leave school

I really like school

I miss being with friends

My doctor is great, he always talks to me rather than at me.

I can't remember what my social worker does, she is nice and friendly, nice to talk to, but I don't know what she is doing

These girls at school were bullying me, I don't know why they didn't like me. I came home crying every night.



"Most young people said they are not given opportunities to think about what they wish to share prior to an SEN review and they do not have the main decisions explained to them afterwards"

Integrated frontline delivery



- Majority bringing frontline staff together
 - More common among those focusing on disabled children.
 - New services – Transition Teams
- Formal transfer / secondment professionals
- Identified workforce challenges
 - High staff turnover
 - Recruitment / retention of staff (incl. experienced staff) in key areas
 - Transfer funding from education / 'health'
 - Pay differentials between professional groups

Disabled Young Adults Team (16-24)

Aim – disabled adults have same opportunities as their non disabled peers, are at the core of the service and are involved in all decision making processes.

Working well:

- Communication between professionals
- Understanding of roles & responsibilities
- Relationship building with providers

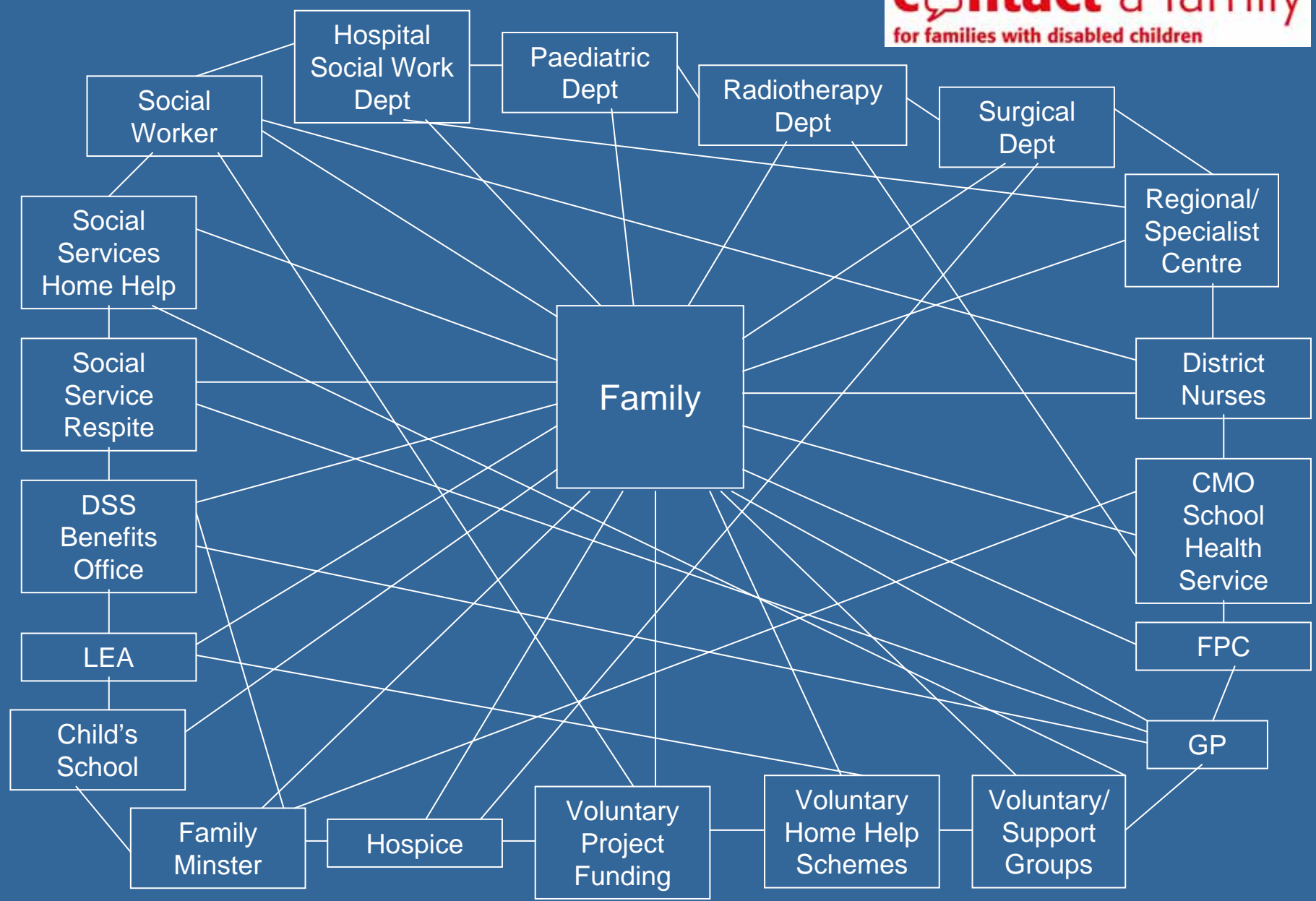
Challenges:

- Developing person centred thinking
- Lack of opportunities with Further Education/ employment / leisure
- Diverse professional cultures / new ways of working

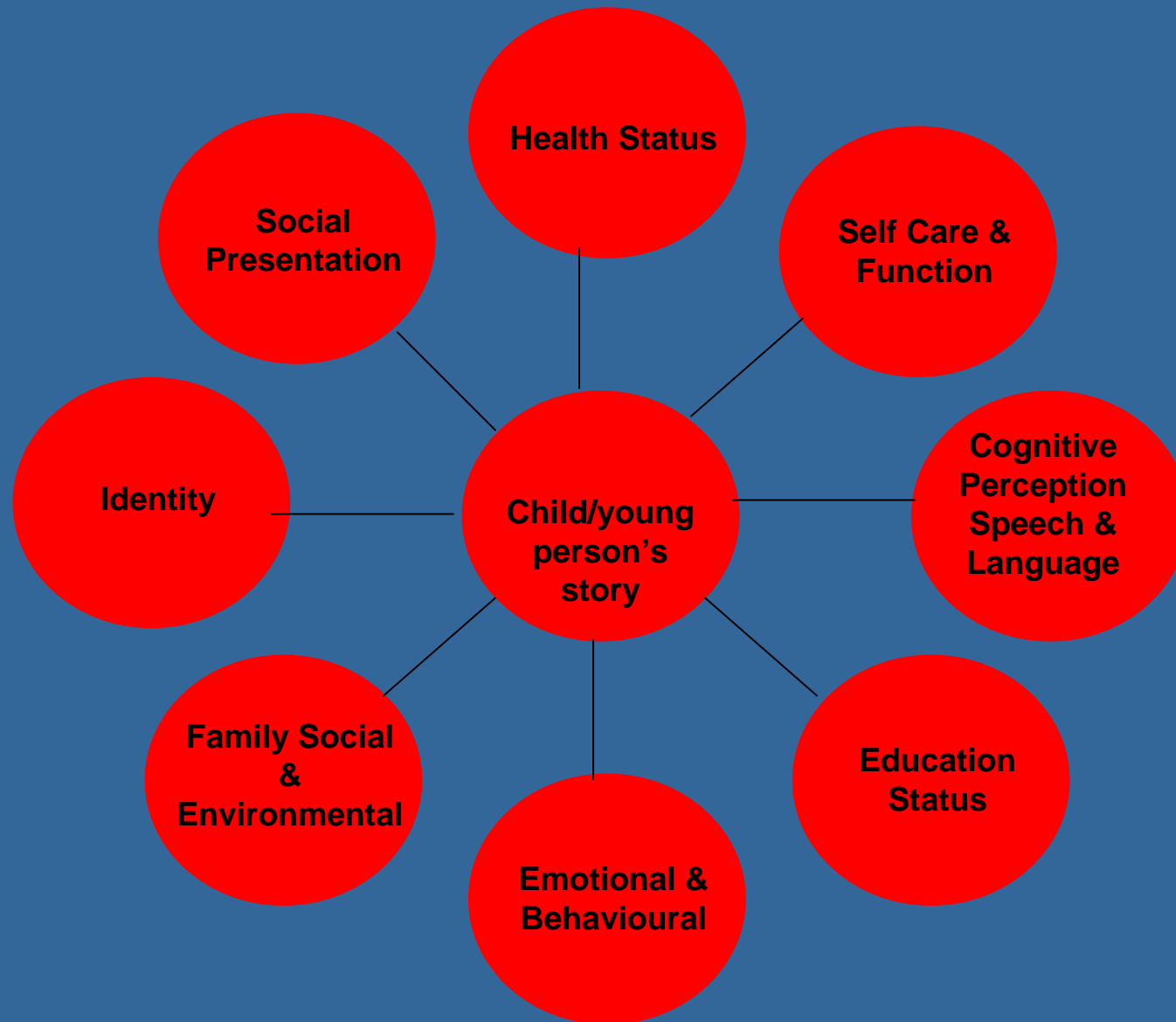
Integrated Processes



- All at different stages
- **Linked to Information Sharing & Assessment (ISA)**
 - Example of two different approaches being piloted with disabled children
 - Newcastle - FAME –www.fame-uk.org
 - Gateshead - Passport to Services
- **Key Worker / Lead Professional**
 - Early Support Pilots
 - Darlington and Nottinghamshire



Link-IT assessment areas



Signs of Well-being

Date completed _____

3rd Draft

© Gateshead/Newcastle Passport to Services, email: passport@nps-services.gateshead.gov.uk

Worries What is happening with the child that is worrying you?		Strengths and Resources What relevant resources and strengths are already in place?	
Children/Young Persons Goals What does the child/young person want to change and what are their ideas for achieving this?	Carers Goals What do the carers want to change and what are their ideas for achieving this?	Professionals Goals What changes do the professionals need to see to be confident about the child's well-being?	
Well-being Scale Given the above information, rate the child's well-being on a scale of 0-10. <i>0 = your worries about the child/young person are bound to continue, 10 = the child/young person is doing well enough that no extra professional involvement is required.</i>	Rating <input type="text"/>	Service User Evaluation Rate this completed form on a scale of 0-10. <i>0 = this has not captured what you have said, 10 = this completely captured what you have said.</i>	Rating <input type="text"/>

Lead professional / key worker Model



Integrated Strategy – Strategic



- Majority advanced stage integrated strategic partnership & planning arrangements
- Many built upon existing partnership structures & processes
- Detailed Needs Analysis – G.I.S, mapping at post code level, including children on disabled needs register, autism, behaviour difficulties, plus importantly linked to slide 1: users views
- Single Children and Young People’s Plan – agreeing priorities

Integrated strategy - Commissioning

- Incremental approach
- Setting up pooled budgets & joint commissioning arrangements is challenging
 - Budgets £48,000 - £37 million ~£5 million
 - Identification 'health' element
- Pooled Budgets / Pooled Resources
 - 15 Section 31 agreements – small targeted
 - SLA's more common
 - Out of Borough Placements / Complex Needs Children

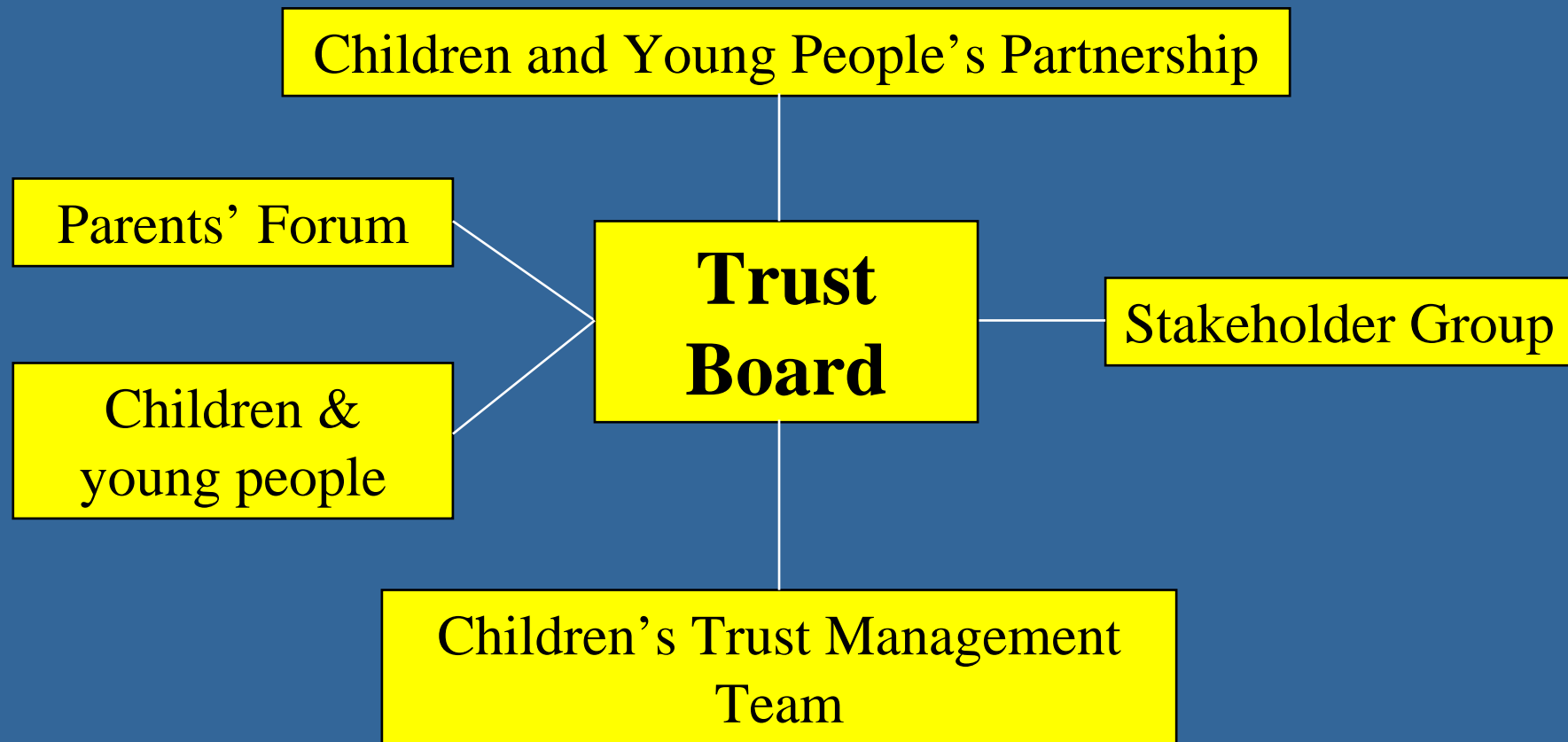


Integrated Governance

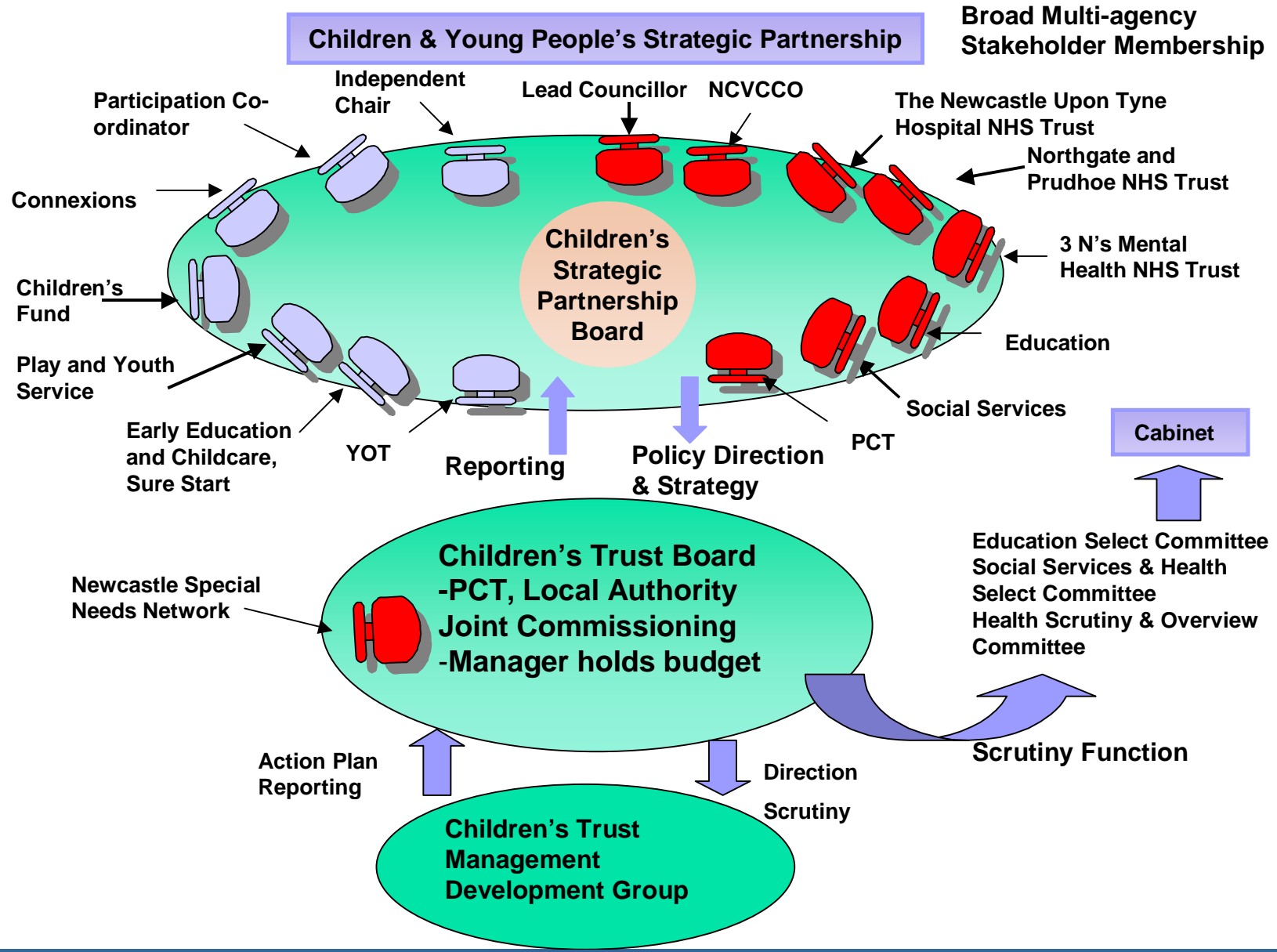


- All pathfinder Children's Trust Board or equivalent with wide representation – majority weighed towards health/education
- Service specific commonly, sub group
- Majority dedicated Children's Trust post (s)
 - Variety background including acute / primary care
- Children's Trust Teams / Units
- Non – coterminous boundaries added complexity

Sutton Children's Trust Governance



NEWCASTLE CHILDREN'S TRUST GOVERNANCE ARRANGEMENTS



Some of the challenges.....

- Identification of a 'health' budget for children and young people.
- Different language / culture ...
- Which staff / services are 'in' ?
- Overlapping boundaries....
- Dispelling the myth that NSF and ECM are separate – with NSF belonging to 'health' and ECM – everyone else?
- 'Equal' partners ? Active participants.....

Next steps

- **National Evaluation**
 - In depth study 8 pathfinders and 3 non pathfinders
- **Local Evaluation**
 - Locally agreed
 - Peer Review in the north
- **National pathfinder seminars**
 - Reports - Commissioning
 - Tool Kit – Pooled Budgets
- **ECM website –**
 - www.everychildmatters.gov.uk

